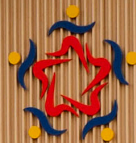




GROWING MINDS

MUDGEE
TEAM TRAINING
VILLAGE
Play - Connect - Achieve



3-Day Agricultural Curriculum School Camp



Agricultural Curriculum

3 day / 2 night School Camp



Bring Agriculture to life through hands-on experience. Provide your students with practical agricultural skills and a deeper understanding of sustainable farming practices.

Objective



The Mudgee Team Training Village offers an immersive agricultural camp experience aligned with the Year 9 and 10 curriculums, giving students hands-on learning in real-world farming practices. These camps foster practical skills, environmental awareness, and team collaboration in the aim to help students connect classroom knowledge with meaningful rural applications.

Camp Overview

Target Audience: Year 9–10 students studying Agriculture (Stage 5) matched with NSW and Australian curriculum outcomes.

Location: Mudgee Team Training Village, Mudgee NSW

Duration: 3 days, 2 nights

Transport: Coach from Sydney (approx. 4 hours)

Capacity: Up to 96 students and 5 teachers/staff

Outcome

By the end of the camp, students will have gained practical agricultural skills, a deeper understanding of sustainable farming practices, enhanced teamwork and problem-solving abilities. This supports Stage 5 curriculum outcomes and inspires future pathways in agribusiness, environmental science, and rural industries.



Sample Itinerary

Note: Final itinerary will be created with teaching staff and individual school requirements.

Day 1 - Arrivals and Farm Systems Introduction

6:30am	Depart Sydney
12:30pm	Arrive at Mudgee Team Training Village Welcome lunch + safety briefing
1:30pm-4:00pm	Interactive session: Introduction to Local Agricultural Systems <ul style="list-style-type: none">– Focus on regional farming practices, climate, and enterprise types– Facilitated by local agronomist or educator
4:00pm-6:00pm	Settling into accommodation, downtime & group activities (e.g., scavenger hunt with ag trivia)
6:30pm	Dinner
7:30pm-9:30pm	Evening workshop: Agricultural Careers + Tech in Ag (guest speaker from TAFE, DPI or local drone spraying company)

Day 2 - Saleyards and Enterprise Site Visits

7:30am	Breakfast
8:30am-11:00am	Visit to Mudgee Saleyards (aligned with cattle/sheep sale day) <ul style="list-style-type: none">– Observe sale in action, understand market processes, pricing, stock handling– Meet a livestock agent to explain roles, logistics & animal welfare considerations
11:30-2:30pm	Visit to Local Sheep or Cattle Property <ul style="list-style-type: none">– Learn about pasture management, animal husbandry, genetics, water systems, fencing– Hands-on activity: tag a lamb, drench sheep, or assess animal condition scoring (depending on time of season as to which activity is organised)– Lunch at the farm (picnic-style or BBQ)

3:00pm-5:00pm	Workshop back at village: Farm enterprise comparison: beef vs wine vs mixed farming
6:00pm	Dinner
7:30pm-9:00pm	Team challenge: Design Your Own Sustainable Farm (group task with mapping + resource budget)

Day 3 - Viticulture and Wrap up

7:30am	Breakfast + pack up
8:30am-10:30am	Visit to local vineyard for a viticulture workshop <ul style="list-style-type: none">– Focus on soil health, irrigation, pruning, seasonal cycles, pest control– Overview of wine production (non-alcoholic focus for students)– Sustainability practices in viticulture
11:00am-12:00pm	Student presentation: What I Learned About Agriculture in Mudgee
12:00pm	Lunch and departure
6:30pm	Arrive back in Sydney





Accommodation and Facilities



Mudgee Team Training Village

- Quad and twin share rooms – all having ensuites and air-conditioning (32 rooms, total 96 beds)
- Separate teacher quarters if required
- Commercial kitchen, dining hall, outdoor dining and BBQ areas
- Outdoor meeting spaces and fields
- Multi-purpose room for night workshops/activities
- Gym and recovery pools
- Games room
- Laundry

Meals

Fully catered: 2 breakfasts, 3 lunches, 2 dinners

- Tailored menus for dietary needs
- Local produce used where possible
- Options and facilities for self-catering offered



Curriculum Alignment: Stage 5 Agriculture (NSW)

The camp supports outcomes from the NSW Stage 5 Syllabus.

Syllabus Outcome	Outcome Description	Camp Activities Aligned
AG5-1	Describes and investigates interactions between the components of agricultural systems	<ul style="list-style-type: none">■ Intro session on local ag systems at Mudgee Team Training Village■ Farm visit (soil, water, plants, animals)■ Vineyard tour (climate, terrain, irrigation)
AG5-2	Explains factors that influence agricultural decisions	<ul style="list-style-type: none">■ Q&A with farmer and viticulturist about seasonal, market, and environmental factors■ Saleyards visit (market forces)
AG5-3	Investigates and implements responsible production practices	<ul style="list-style-type: none">■ Hands-on farm experiences (e.g., livestock health, fencing, pasture management)■ Workshop on sustainable viticulture & organic land practices
AG5-4	Evaluates the impact of innovation and technologies on agricultural systems	<ul style="list-style-type: none">■ Evening talk: Tech in Ag (drones, apps, automated irrigation)■ Saleyards and viticulture site processes
AG5-5	Investigates and implements sustainable practices in agricultural enterprises	<ul style="list-style-type: none">■ Group challenge: Design a sustainable farm■ Vineyard tour focused on eco-practices■ Farm case studies
AG5-6	Researches and analyses legal, social, ethical, and occupational health issues	<ul style="list-style-type: none">■ Discussion with livestock agent and farmer on animal welfare and biosecurity■ Camp safety and PPE protocols
AG5-7	Communicates agricultural information and issues using a variety of forms	<ul style="list-style-type: none">■ Final group presentations on “What I learned”■ Reflection journal or workbook■ Group posters/maps
AG5-8	Investigates the management of an agricultural enterprise	<ul style="list-style-type: none">■ Saleyards visit (marketing and enterprise decisions)■ Compare beef vs sheep vs vineyard operations

Optional Extension (Australian Curriculum Cross-links)

If any interstate schools are interested or if you would like a broader alignment, the program can also broaden the scope to:

- ACARA Design and Technologies (Years 9–10)
 - ACTDEK051: Investigate and make judgments on how the characteristics and properties of materials are used in agricultural systems.
 - ACTDEK053: Evaluate the sustainability of agricultural systems.

Optional Selections - Educational Experiences to enhance learning & tailor to the schools curriculum.

Selections to assist in tailoring the camp by having local experts presenting and showcasing the below areas.

Education Experience	Activation
Viticulture	Guest speakers / Vineyard tours
Organic Land Practices	Guest speakers / workshops
Tech in Ag	Workshops - Drone spraying demonstrations
Local Land Services – Cattle 101, Sheep 101, Pests Management	Local demonstrations and lectures
Artificial Insemination	Guest speakers / farm tours / workshops
Bee Hive Management	Guest speaker / tours
Agronomy	Guest Speakers / Workshops / Farm Tours
Indigenous Bush Foods Workshop	Guest speakers / demonstrations and workshops
Sourdough bread making classes	Workshop
Olive Grove management and production	Grove tour / guest speaker
Cheesemaking production	Tour & demonstrations
Sale yard visits - markets	Livestock agent / Tours Store cattle sales – Last Thursday of every month Prime livestock Sales – Every second Wednesday
Chocolate making factory	Tour & demonstrations



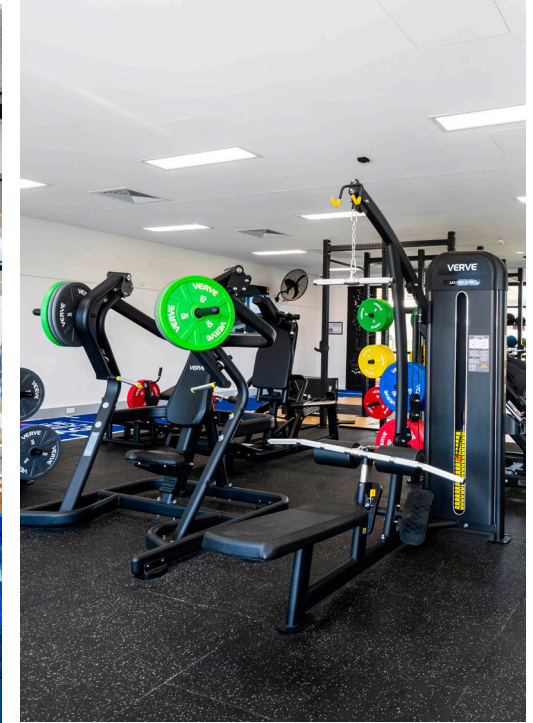


Estimated Package Inclusions



Based on sample itinerary, prices will be confirmed upon enquiry and itinerary choices.

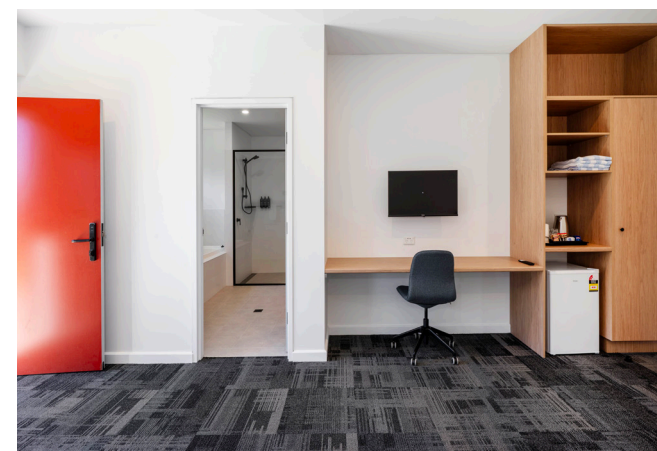
- Accommodation (2 nights)
- 7 meals + snacks
- All site visit entry fees and facilitators
- Transport support planning (if school doesn't have own transportation)
- Risk assessments + insurance cover



Indicative Price Breakdown per Student

Note: Pricing example is based on 40 students and only a guide. The Village Manager will work closely with educational staff tailoring the camp to the schools' requirements.

Inclusion	Estimated Cost per Student	Notes
Accommodation (2 nights)	\$190	\$80 - \$110 per night per student, quad or twin room at Mudgee Team Training Village
Meals (6 total + snacks)	\$153	Includes 2 breakfasts, 3 lunches (1 on-farm), 2 dinners, fruit/snack packs daily
Saleyards Visit + Guide	\$18	Group booking, speaker/presenter fee, and printed handouts
Farm Tour & Practical Activities	\$30	Includes farm entry, farmer facilitation, activity setup (e.g., drenching, tagging)
Vineyard Visit (Viticulture Focus)	\$25	Group facilitation, tour, sustainability presentation, and sampling (non-alcoholic)
Workshops & Night Programs	\$18	Guest speaker (ag tech, careers), student group materials, team challenge supplies
Teacher Free of Charge Allocation	\$45	Cost of 4 staff absorbed across 40 students (\$800-\$1,000 shared across student pricing)
Transport Contribution (Optional)	\$90	Can be removed if school books own coach – this reflects a return group bus hire subsidy
Insurance, Admin & Program Coordination	\$28	Includes booking, risk management, WHS compliance, and on-site facilitation
TOTAL EST. PRICE	\$597	Ranges based on supplier choice, bus inclusion, and final catering selections



Ready to bring the curriculum to life?

Contact us today to plan your school's agricultural camp
experience at Mudgee Team Training Village

E: info@mudgeevillage.com.au

M: 0467 447 672

**MUDGE
TEAM TRAINING
VILLAGE**

Stay • Connect • Achieve

